

Appendix 1.

## **City Cluster Area update**

### **Programme 2: Well-being & Climate change resilience**

April 2021

## City Cluster Area programme: delivery framework 2021-2024

### Funding strategy

S106 and S278

CIL contributions

External funding sources

Climate Action Strategy

TfL Liveable neighbourhoods

### **Programme 1:**

#### **Pedestrian priority & traffic reduction**

Ensure pedestrian routes can accommodate the projected increases in pedestrians and cyclists flows by rebalancing the street capacity.

### **Healthy Streets Plan**

To set out the changes required to the street network to deliver the City Cluster Vision.

### **Programme 2:**

#### **Well-being & Climate change resilience**

Promote the improvement of public spaces and introduce greenery to deliver an attractive environment.

### **Programme 3:**

#### **Activation & engagement**

Deliver public places that are welcoming and inclusive; and encourage public participation and social engagement.

## **Programme 2: Well-being & Climate change resilience**

### **Objectives:**

- Increase the amount of greenery to help mitigate the impacts of climate change, noise and air pollution and soften the urban environment.
- Deliver more accessible and attractive spaces to rest and spend time in, including responding to the need for social distancing.
- The creation of 'green corridors' along busy pedestrian routes.
- Deliver spaces which offer opportunities for place activation in a safe street environment i.e. facilitation of Programme 3 - Activation and Engagement.
- Deliver sustainable urban drainage systems in line with the emerging Climate Action strategy.
- Contribute to the well-being of local users by offering outdoor spaces to rest, work and spend time in. In the context of the Covid19 pandemic, the value of our greenspaces and the role of nature will play a fundamental role in our recovery from the crisis.

## Programme 2: Well-being & Climate change resilience

### Well-being & Climate Change resilience programme PROJECTS

#### Improvements to existing public spaces

##### Short term:

1. St Helen's Bishopsgate
2. St Andrew Undershaft
3. Jubilee Gardens

##### Medium-long term:

- St Peter Upon Cornhill
- St Botolph Bishopsgate

#### Green Streets

##### Short term-interim measures:

4. Philpot Lane – Rood Lane
5. Creechurch Lane – Stoney Lane

##### Medium-long term:

- Camomile Street
- Leadenhall Street
- Eastcheap
- Billiter Street

#### Climate Change Resilience measures

##### Short term:

6. Bevis Marks-Dukes Place
7. Area wide tree planting

##### Medium-long term:

- Houndsditch
- Camomile Street
- Others to be determined



## Programme 2: Well-being & Climate change resilience

### Projects (2021-2024):



#### Existing public spaces:

1. St Helen's Bishopsgate
2. St Andrew Undershaft
3. Jubilee Gardens



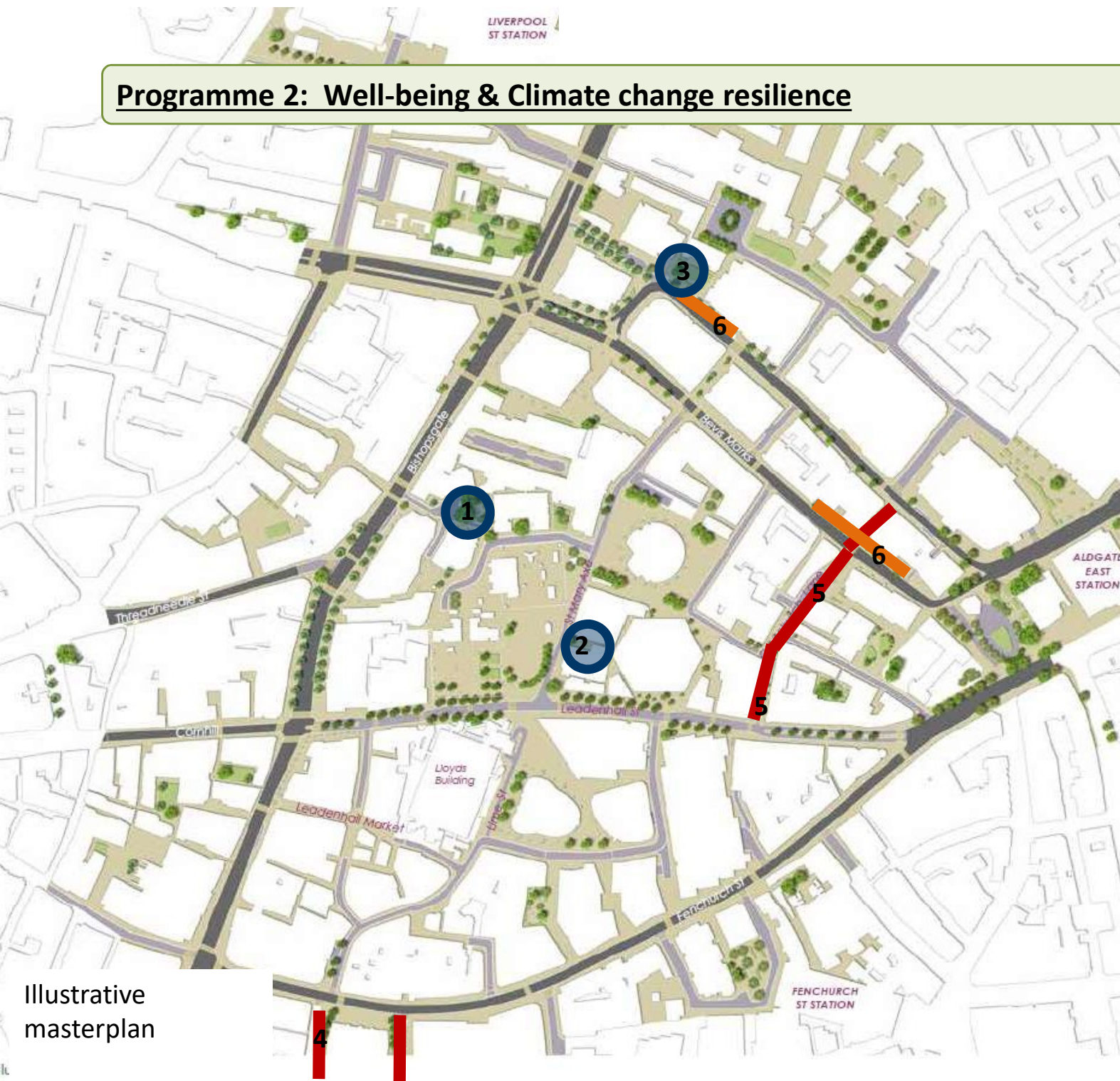
#### Green streets:

4. Philpot Lane – Rood Lane
5. Creechurch Lane - Stoney Lane (interim measures)



#### Climate Change resilience Measures:

6. Bevis Marks/Dukes Place
7. Area wide tree planting (various sites)



Illustrative  
masterplan



## 1. St Helen's Bishopsgate. Current condition





## 1. St Helen's Bishopsgate

**Aim:** to redesign the churchyard to provide a peaceful and green space away from the noise and pollution of the adjacent roads

- ① Develop a unified space designed that celebrates the heritage and open churchyard character of the site.
- ② Introduce more greenery that is easy to maintain and provides a variety of colour and strikes a balance between the hard and soft landscape.
- ③ Increase seating provision complementary to the size of the space; seating that is incorporated within the design of the churchyard.
- ④ Provide inclusive access to enable all users to visit the space as well as improving the pedestrian route from Undershaft to Bishopsgate.
- ⑤ Incorporate a discrete bin store.
- ⑥ Assess the need of lighting and therefore the perceived safety within the space at night-time.





## 1. St Helen's Bishopsgate



Illustrative view.



## 2. St Andrew Undershaft. Current condition

### Heritage

Stonework on boundary wall and railings are in need of repair

### Levels and access

The space is maintained by COL and has public access.

The existing paving is in bad cracked condition and uneven leading to poor drainage.

### Greenery

Soft landscape is only in the form of shrubs in high concrete planters that are leaning out and in need of repair.

### Seating and furniture

Existing benches are in poor condition.

In the absence of a bin store, unsightly bins litter a section of the Churchyard.





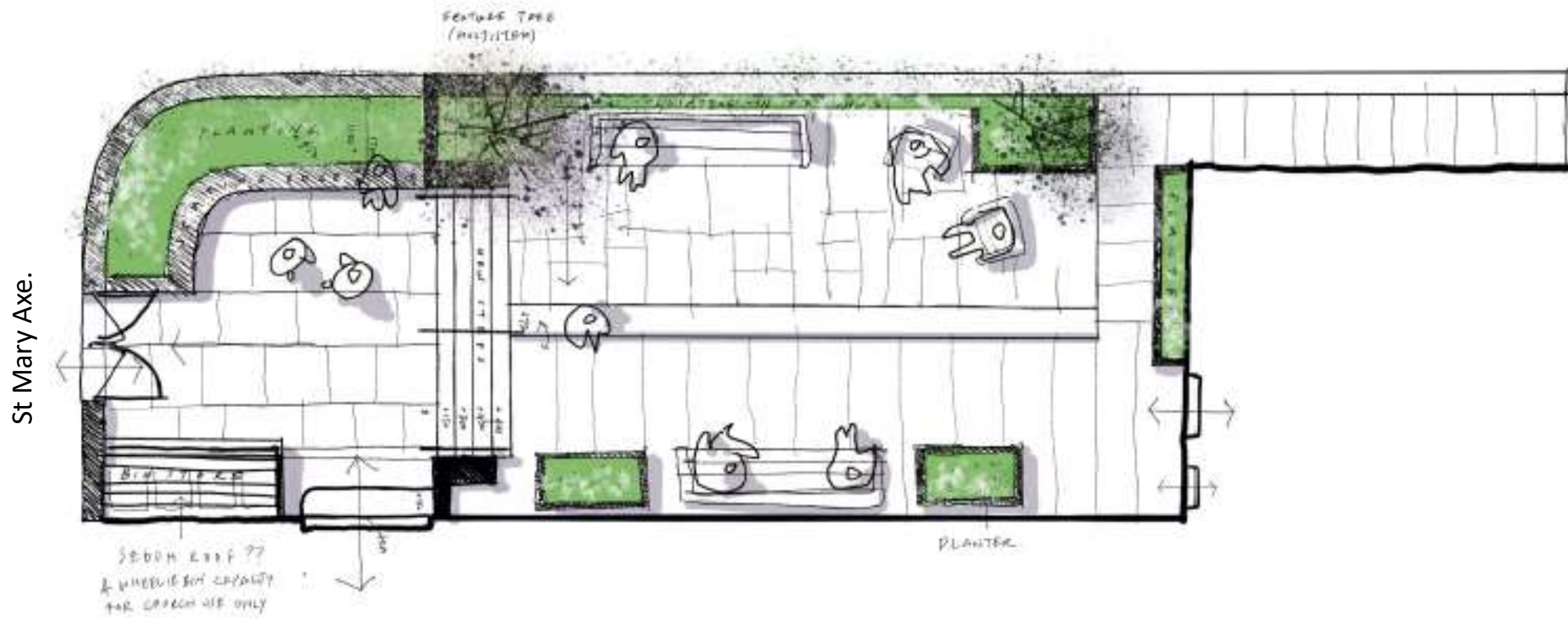
## 2. St Andrew Undershaft. Illustrative view



Illustrative view.

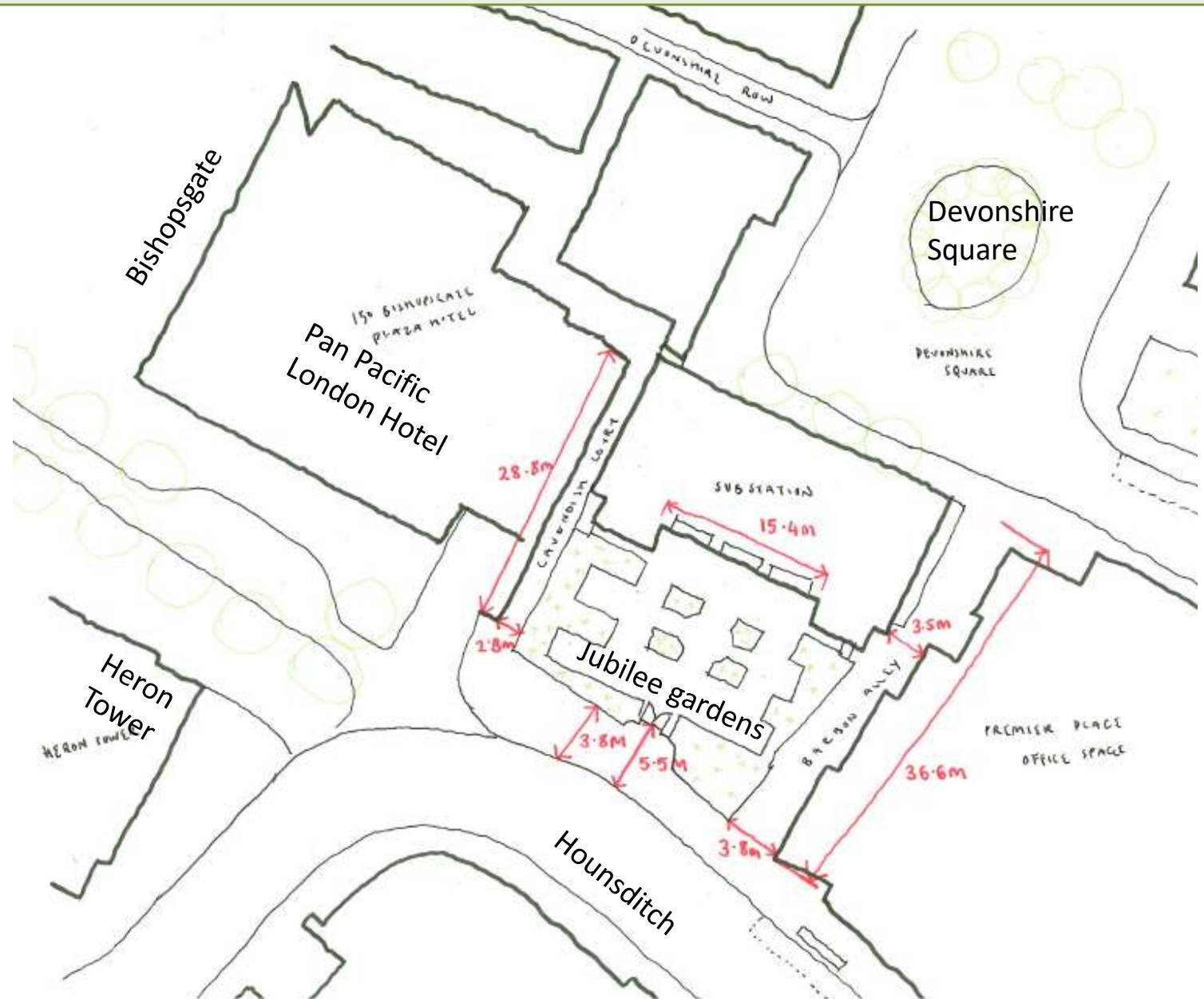


## 2. St Andrew Undershaft. Plan



Plan.

### 3. Jubilee Gardens. Current condition





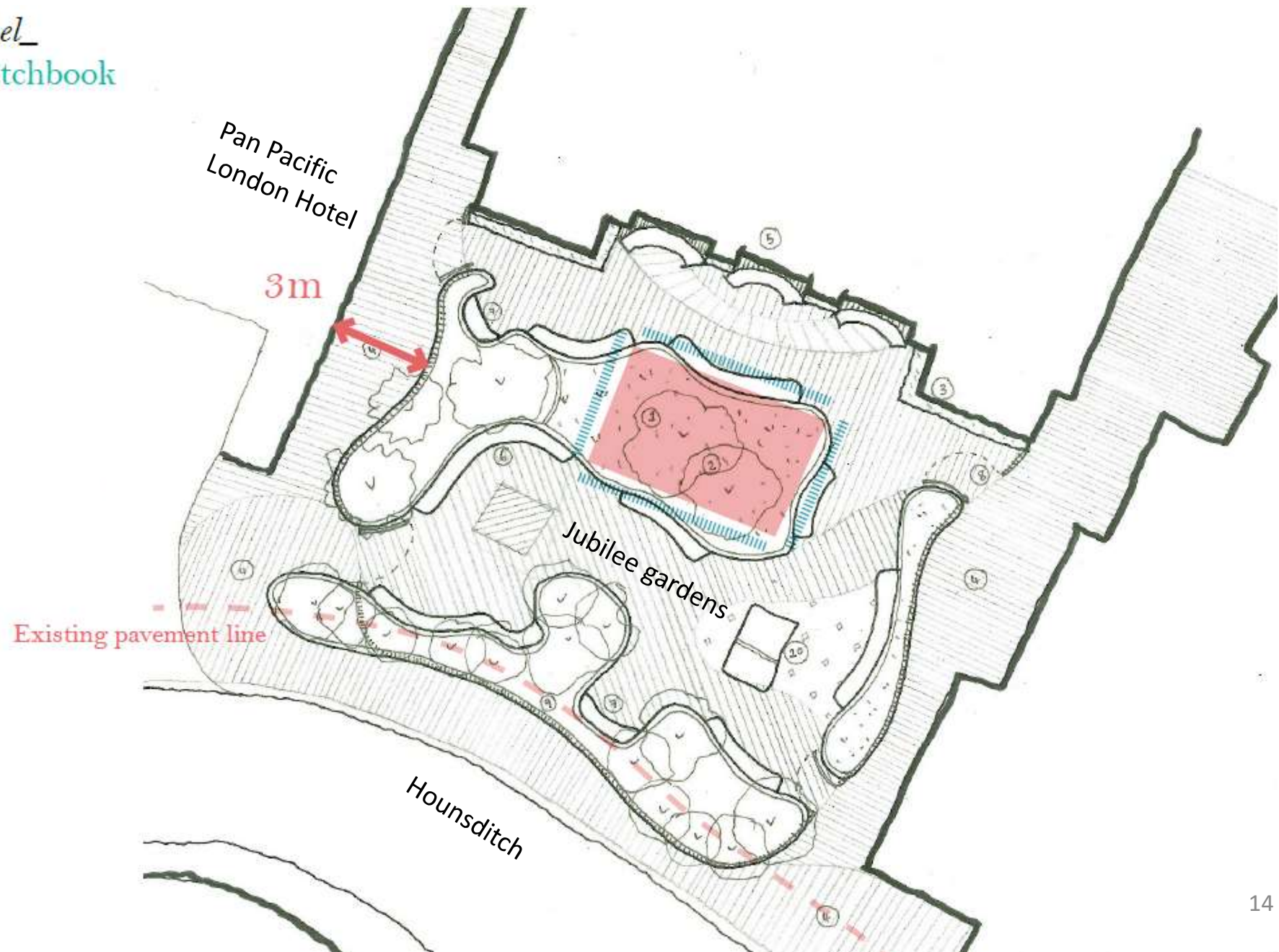
### 3. Jubilee Gardens. Current condition



Inside garden space.

### 3. Jubilee Gardens. Illustrative sketch plan

*Look & Feel\_*  
Initial Sketchbook





### 3. Jubilee Gardens. Illustrative sketch.





#### 4. Philpot Lane. Green streets – interim measures

Interim greening measures will deliver an improved environment in the short-medium term and will enable proposals to be tested ahead of permanent changes and informed by consented developments in the nearby area.



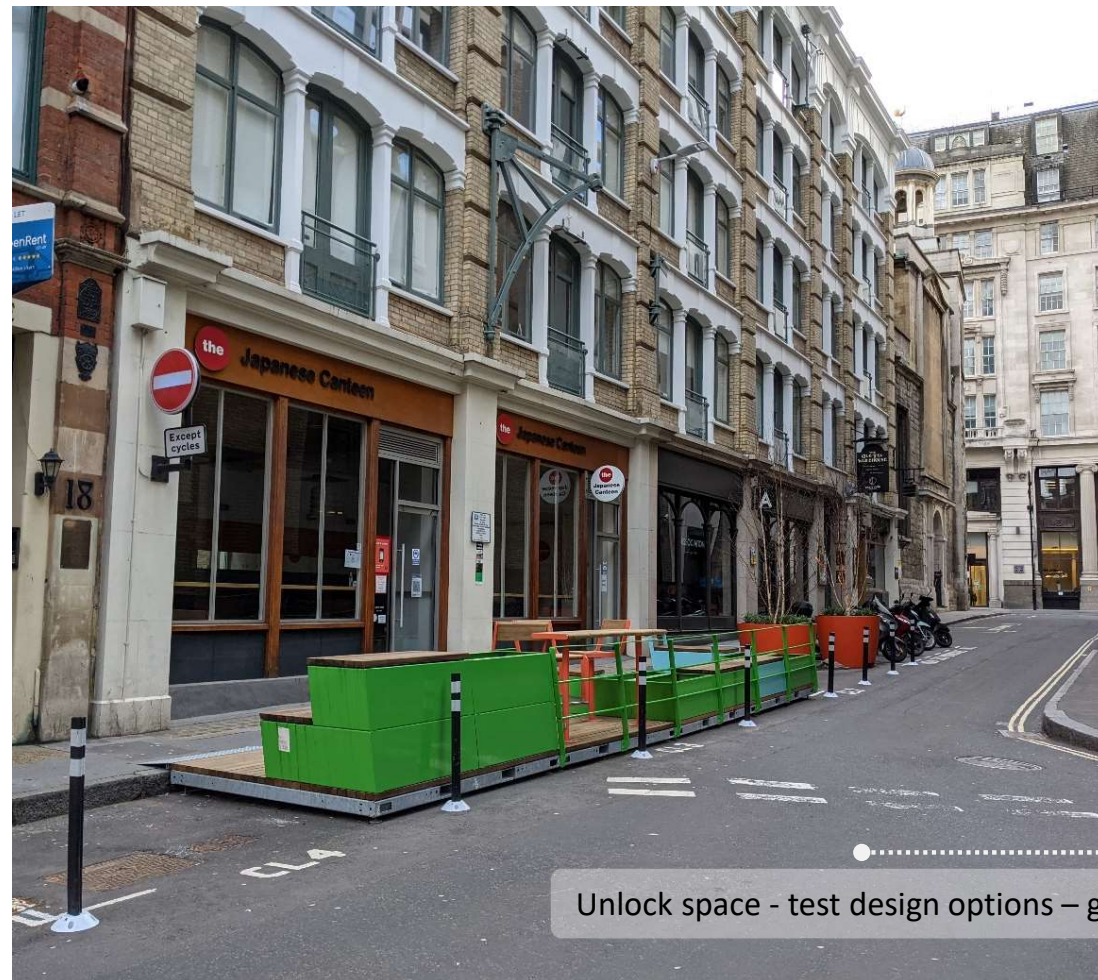
Current situation.  
Temporary greening and seating measures have been delivered on Philpot Lane as part of the Covid recovery strategy.



Proposed.  
A welcoming pedestrian environment, integrating greening measures.



## 5. Creechurch Lane - Green streets – interim measures



Unlock space - test design options – green infrastructure – flexible active space

Current situation. Short-medium term intervention  
Parklets and additional greenery have been implemented on Creechurch Lane as part of the Covid recovery strategy.



Proposed. Long term vision  
A welcoming pedestrian environment, integrating greening and seating areas, creating a vibrant destination.

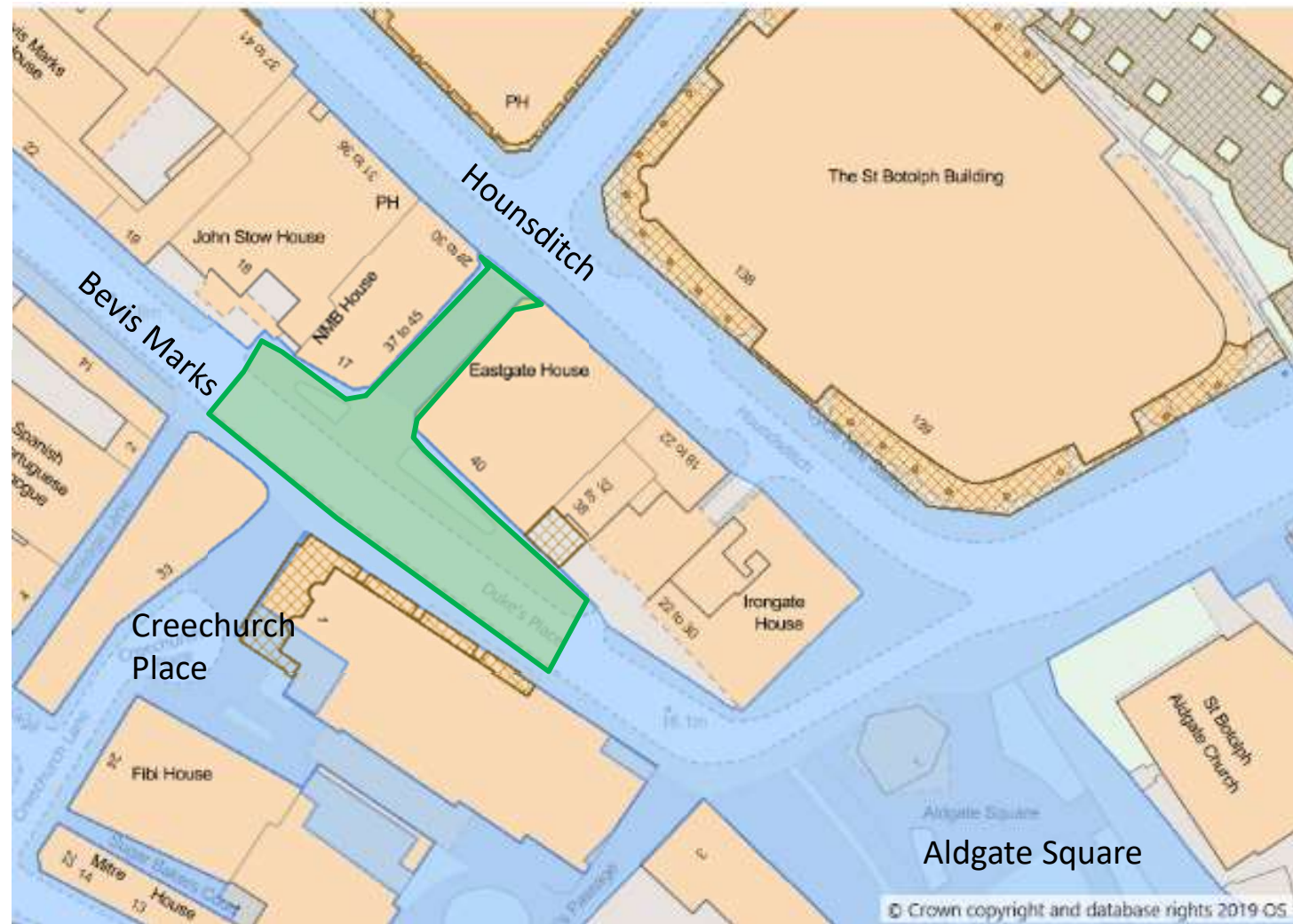


## 6. Bevis Marks/Dukes Place.

Site location.

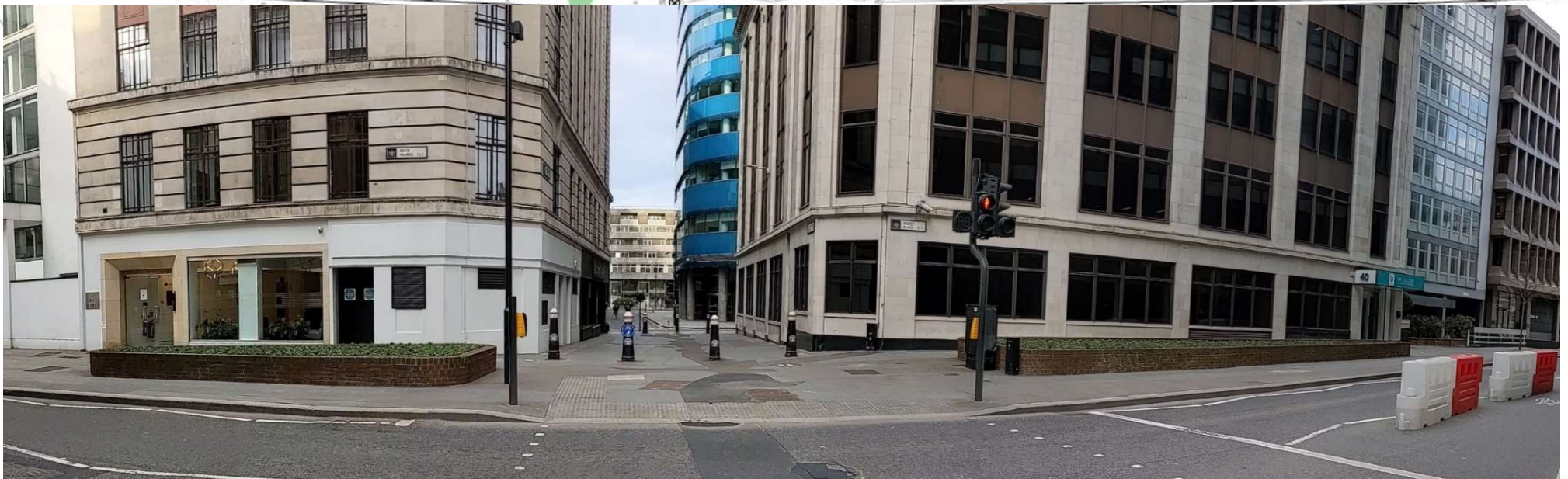
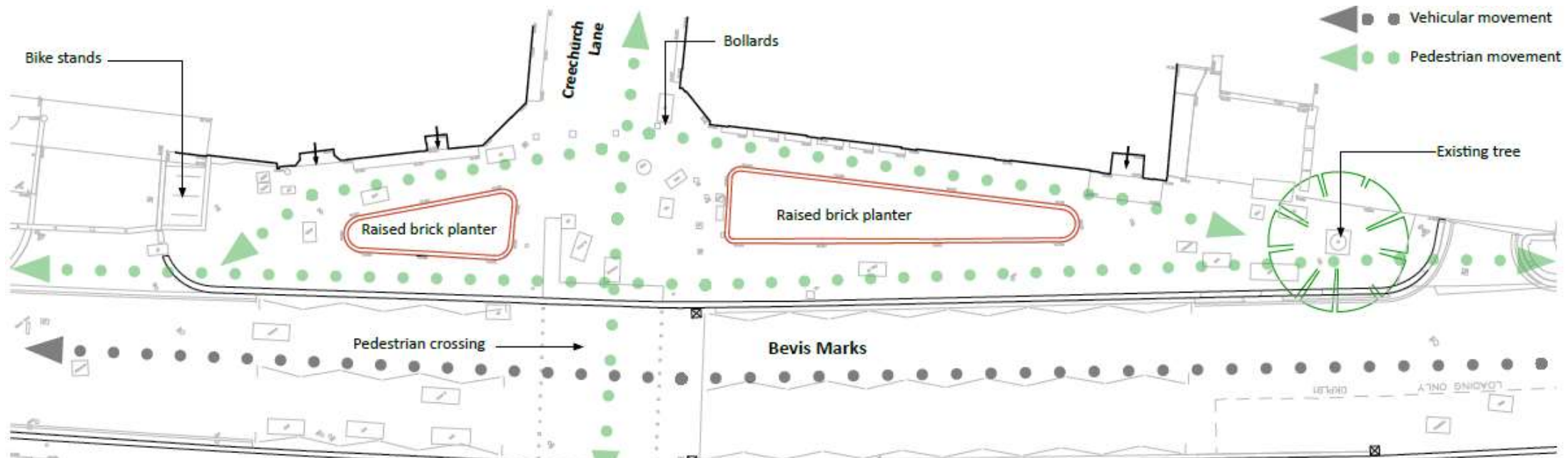
Implementation of a sustainable urban drainage for the site.

Adjustment of planting areas and reprofiling of footway and carriageway areas.





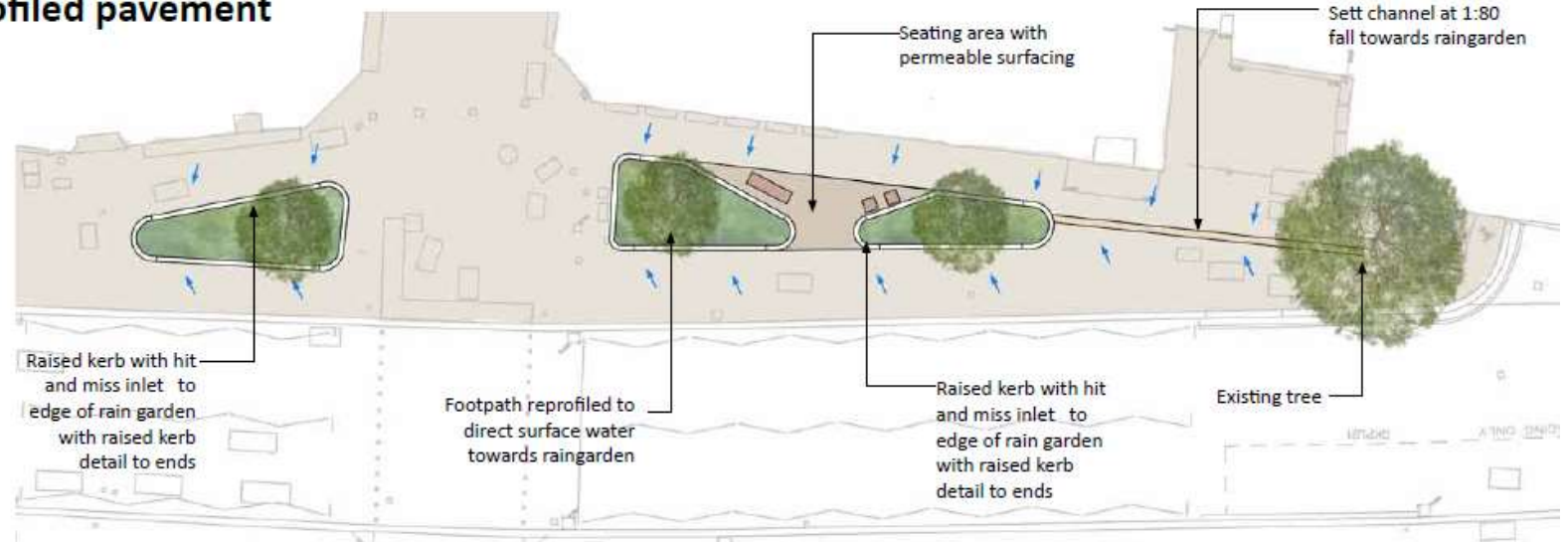
## 6. Bevis Marks/Dukes Place. Current condition



Bevis Marks – Dukes Place site.

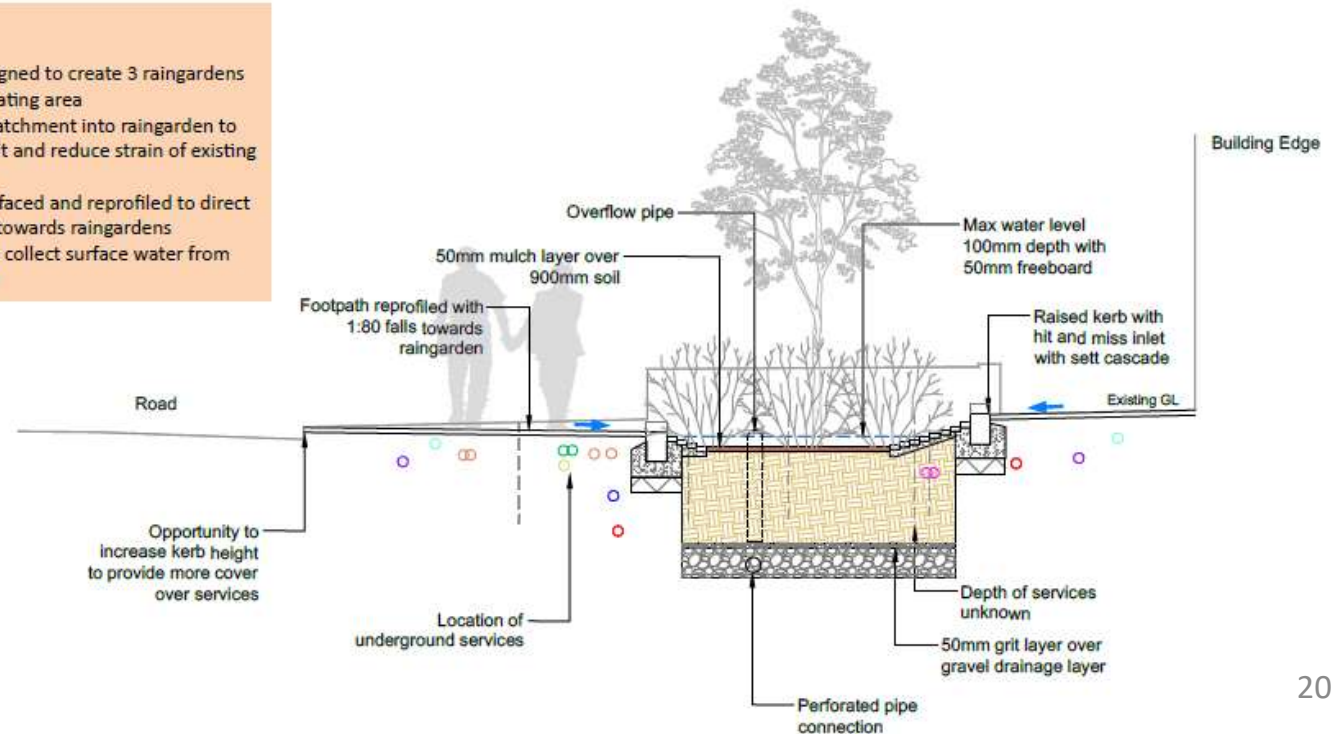
## 6. Bevis Marks/Dukes Place. Proposal for Suds system

### Design option 2a- Reprofiled pavement



#### Design option 2a

- Planters redesigned to create 3 raingardens with central seating area
- Allows wider catchment into raingarden to increase benefit and reduce strain of existing sewer system
- Footpath resurfaced and reprofiled to direct surface runoff towards raingardens
- Sett channel to collect surface water from wider site area





## 7. Tree planting across the area

### Tree planting across the area

Next steps:

- Streets for trial holes to potentially include:
- Crutched Friars, Bevis Marks, Houndsditch, Fenchurch Street, Leadenhall Street, Mark Lane.

